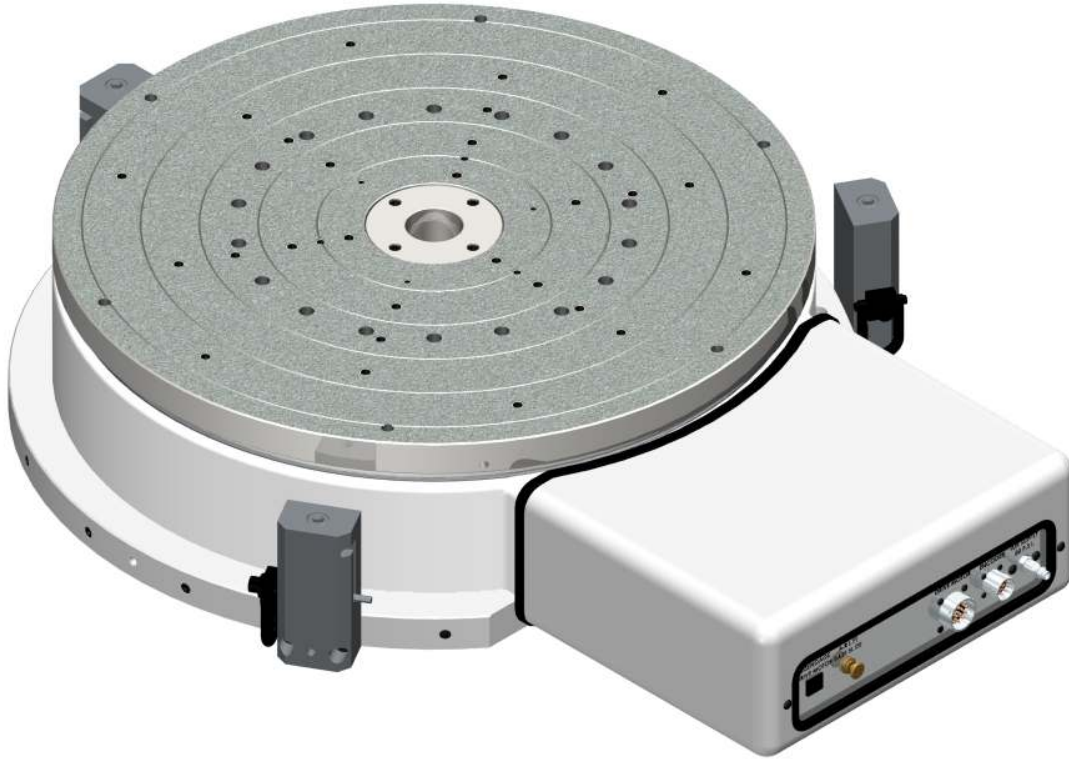


Air Bearing Capstan Servo (ABCS) Rotary Tables

RT26-ABCS



RT26 Face Plate Geometry Specifications

Description	Accuracy Grades		
	2	4	8
Face Plate Runout at 11.0 in. (279.4 mm) Radius	0.000040 (.0010 mm)	0.000060 (.0015 mm)	0.000085 (.0022 mm)
Base Runout at 13.5 in. (342.9 mm) Radius	0.000080 (.0020 mm)	0.000110 (.0028 mm)	0.000160 (.0041 mm)
Face Plate Dish (Flatness)	0.000050 (.0013 mm)	0.000080 (.0020 mm)	0.000165 (.0042 mm)
Center Pilot Runout	0.000040 (.0013 mm)	0.000060 (.0015 mm)	0.000080 (.0020 mm)

Load Capacity Radial	Load Capacity Thrust	Stiffness Thrust	Operating Air Pressure	RT Weight
370 lbs. (168 kg)	2,660 lbs. (1,206 kg)	9-20 lbs/microinch 160-360 kg/micron	80 PSI (5.5 Bar)	895 lbs. (406 kg)

RT26 Servo Drive Options

Description	Drive Options			
	530	883	1100	1400
Drive Motor	PMI #U12M4T	PMI #U12M4T	PMI #U12M4T	PMI #U12M4T
Tachometer	Yes	Yes	Yes	Yes
Drive Ratio	530:1	883:1	1100:1	1400:1
Maximum RPM	5.6	3.4	2.7	2.1

Performance Grade (Reflected Load Inertia Ratio)							
Drive Ratio	0.5	0.75	1	1.25	1.5	1.75	2
	Inertia Capacity (lb-ft ²)						
530	204	509	815	1121	1427	1733	2039
883	672	1521	2371	3220	4070	4920	5769
1100	1193	2511	3828	5145	6463	7780	9098
1400	2094	4228	6362	8496	10629	12763	14897
	Inertia Capacity (kg-m ²)						
530	8.6	21.5	34.4	47.2	60.1	73.0	85.9
883	28.3	64.1	99.9	135.7	171.5	207.3	243.1
1100	50.3	105.8	161.3	216.8	272.3	327.9	383.4
1400	88.2	178.2	268.1	358.0	447.9	537.9	627.8