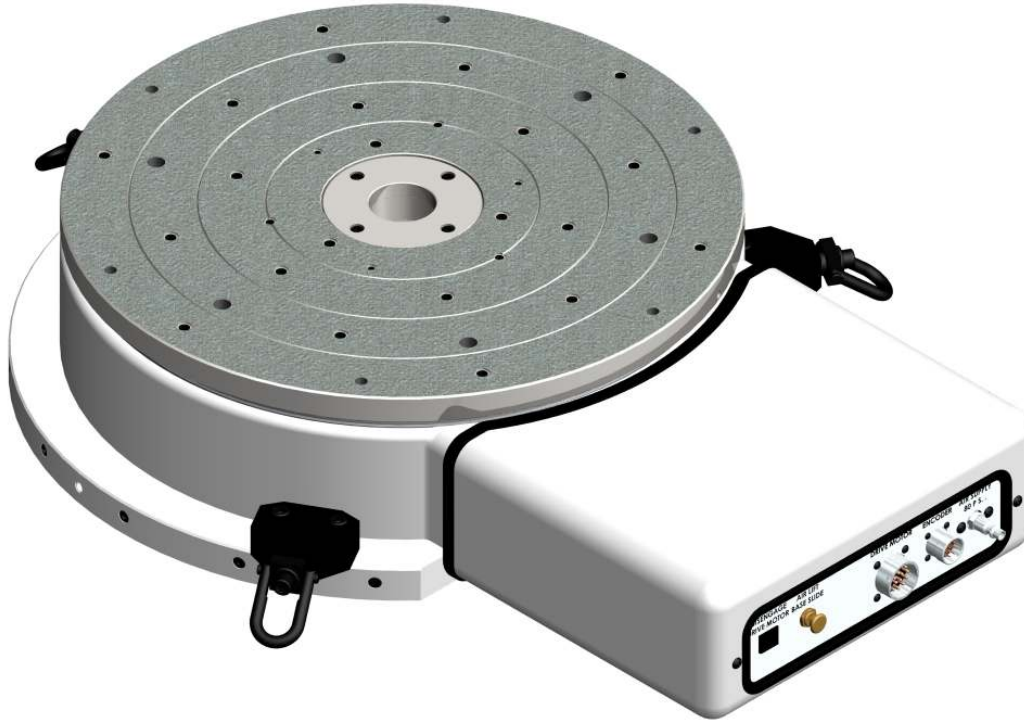


Ball Bearing Capstan Servo (BBCS) Rotary Tables

RT20-BBCS



RT20 Face Plate Geometry Specifications

Description	Accuracy Grades		
	15	30	60
Face Plate Runout at 8.5 in. (215.9 mm) Radius	0.000030 (.0008 mm)	0.000060 (.00152 mm)	0.000110 (.0028 mm)
Base Runout at 11.0 in. (279.4 mm) Radius	0.000060 (.0015 mm)	0.000120 (.0030 mm)	0.000220 (.0056 mm)
Face Plate Dish (Flatness)	0.000060 (.001157 mm)	0.000120 (.0030 mm)	0.000220 (.0056 mm)
Center Pilot Runout	0.000050 (.00127 mm)	0.000100 (.0025 mm)	0.000200 (.0051 mm)

Load Capacity Radial	Load Capacity Thrust	Stiffness Thrust	Operating Air Pressure	RT Weight
825 lbs. (375 kg)	2,200 lbs. (1,000 kg)	6-12 lbs/microinch 110-220 kg/micron	80 PSI (5.5 Bar)	380lbs. (172 kg)

RT20 Servo Drive Options

Description	Drive Options		
	671	836	1064
Drive Motor	PMI U9M4T	PMI U9M4T	PMI U9M4T
Tachometer	Yes	Yes	Yes
Ratio	671:1	836:1	1064:1
Maximum RPM	4.5	3.6	2.8

Performance Grade (Reflected Load Inertia Ratio)						
Drive Ratio	0.75	1	1.25	1.5	1.75	2
	Inertia Capacity (lb-ft ²)					
671	29	186	342	499	656	812
836	80	323	566	808	1051	1294
1064	171	565	958	1352	1745	2139
	Inertia Capacity (kg-m ²)					
671	1.2	7.8	14.4	21.0	27.6	34.2
836	3.4	13.6	23.8	34.1	44.3	54.5
1064	7.2	23.8	40.4	57.0	73.5	90.1