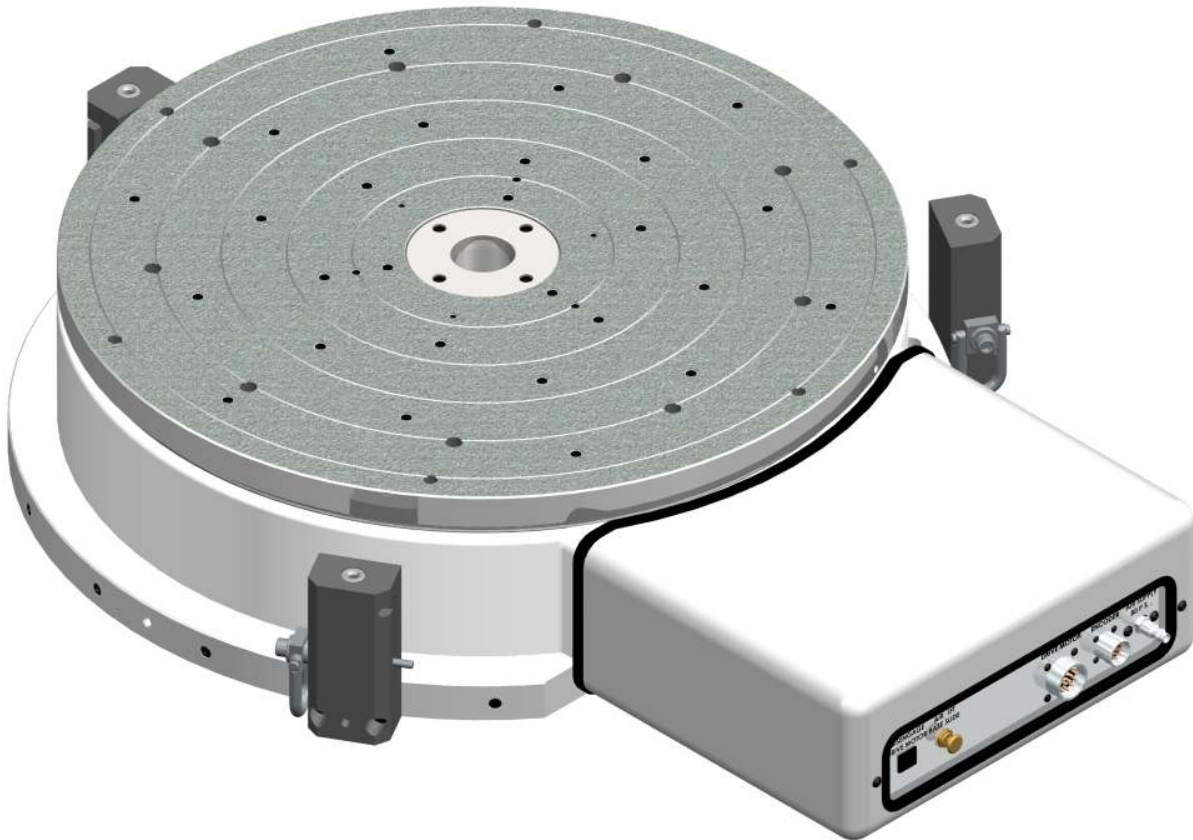


Ball Bearing Capstan Servo (BBCS) Rotary Tables

RT26-BBCS



RT26 Face Plate Geometry Specifications

Description	Accuracy Grades		
	15	30	60
Face Plate Runout at 11.0 in. (279.4 mm) Radius	0.000080 (.0020 mm)	0.000160 (.0041 mm)	0.000320 (.0081 mm)
Base Runout at 13.5 in. (342.9 mm) Radius	0.000160 (.0041 mm)	0.000320 (.0056 mm)	0.000640 (.0163 mm)
Face Plate Dish (Flatness)	0.000160 (.0041 mm)	0.000320 (.0081 mm)	0.000640 (.0163 mm)
Center Pilot Runout	0.000100 (.0025 mm)	0.000200 (.0051 mm)	0.000400 (.0102 mm)

Load Capacity Radial	Load Capacity Thrust	Stiffness Thrust	Operating Air Pressure	RT Weight
1300 lbs. (591 kg)	3475 lbs. (1,580 kg)	9-20 lbs/microinch 160-360 kg/micron	80 PSI (5.5 Bar)	700 lbs. (318 kg)

RT26 Servo Drive Options

Description	Drive Options			
	530	883	1100	1400
Drive Motor	PMI #U12M4T	PMI #U12M4T	PMI #U12M4T	PMI #U12M4T
Tachometer	Yes	Yes	Yes	Yes
Drive Ratio	530:1	883:1	1100:1	1400:1
Maximum RPM	5.6	3.4	2.7	2.1

Performance Grade (Reflected Load Inertia Ratio)							
Drive Ratio	0.5	0.75	1	1.25	1.5	1.75	2
		Inertia Capacity (lb-ft ²)					
530	259	565	871	1177	1482	1788	2094
883	727	1577	2426	3276	4126	4975	5825
1100	1249	2566	3884	5201	6518	7836	9153
1400	2149	4283	6417	8551	10685	12819	14953
	Inertia Capacity (kg-m ²)						
530	10.9	23.8	36.7	49.6	62.5	75.4	88.2
883	30.7	66.5	102.3	138.1	173.9	209.6	245.4
1100	52.6	108.1	163.7	219.2	274.7	330.2	385.7
1400	90.6	180.5	270.4	360.3	450.3	540.2	630.1