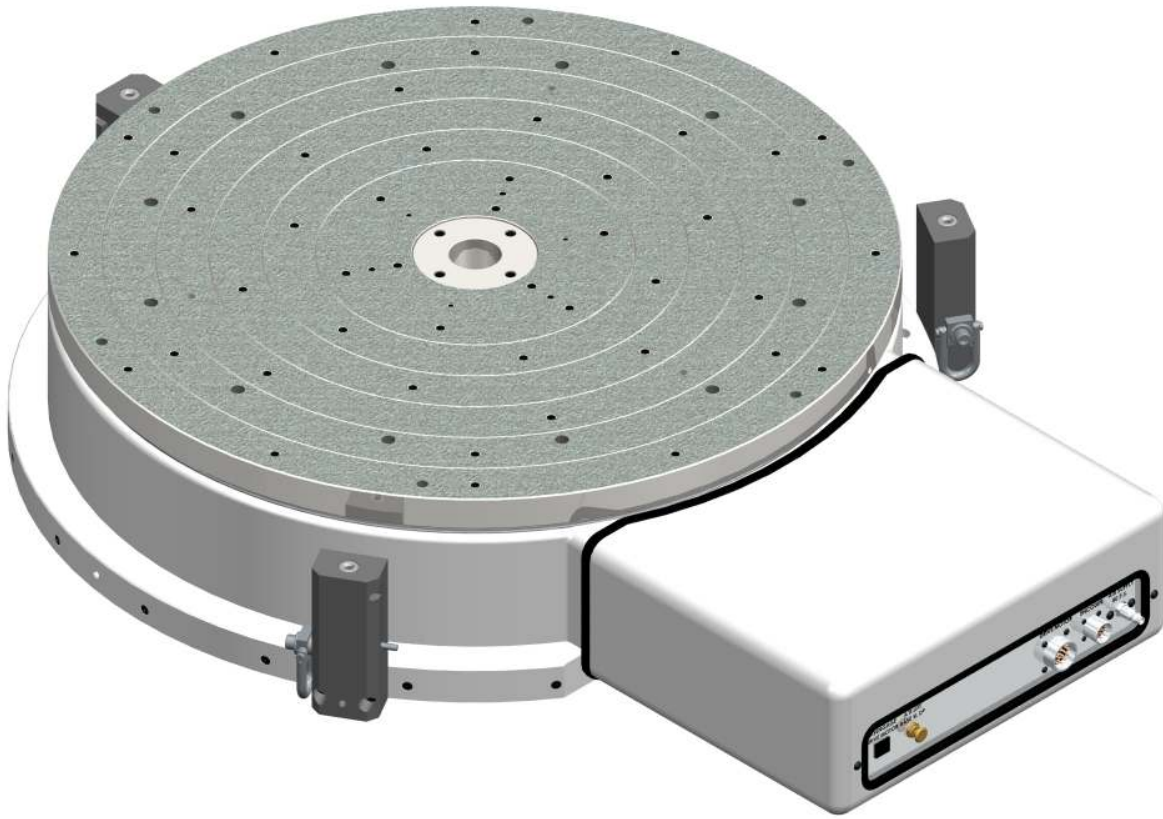


# Ball Bearing Capstan Servo (BBCS) Rotary Tables

## RT32-BBCS



RT32 Face Plate Geometry Specifications

Description	Accuracy Grades		
	15	30	60
<b>Face Plate Runout</b> at 14.5 in. (368.3 mm) Radius	0.000090 (.0023 mm)	0.000180 (.0046 mm)	0.000360 (.0091 mm)
<b>Base Runout</b> at 16.5 in. (419.1 mm) Radius	0.000180 (.0046 mm)	0.000360 (.0091 mm)	0.000720 (.0183 mm)
<b>Face Plate Dish</b> (Flatness)	0.000160 (.0046 mm)	0.000360 (.0091 mm)	0.000720 (.0183 mm)
<b>Center Pilot Runout</b>	0.000100 (.0025 mm)	0.000200 (.0051 mm)	0.000400 (.0102 mm)

Load Capacity Radial	Load Capacity Thrust	Stiffness Thrust	Operating Air Pressure	RT Weight
1650 lbs. (750 kg)	4,025 lbs. (1830 kg)	11-25 lbs/microinch 200-460 kg/micron	80 PSI (5.5 Bar)	1,140 lbs. (517kg)

## RT32 Servo Drive Options

Description	Drive Options	
	465	620
<b>Drive Motor</b>	PMI #U16M4T	PMI #U16M4T
Tachometer	Yes	Yes
Drive Ratio	465:1	620:1
Maximum RPM	6.4	4.8

Performance Grade (Reflected Load Inertia Ratio)							
Drive Ratio	0.5	0.75	1	1.25	1.5	1.75	2
	Inertia Capacity (lb-ft <sup>2</sup> )						
<b>465</b>	1,182	2,196	3,211	4,225	5,239	6,253	7,268
<b>620</b>	2,501	4,304	6,107	7,910	9,713	11,515	13,318
	Inertia Capacity (kg-m <sup>2</sup> )						
<b>465</b>	50	93	135	178	221	264	306
<b>620</b>	105	181	257	333	409	485	561