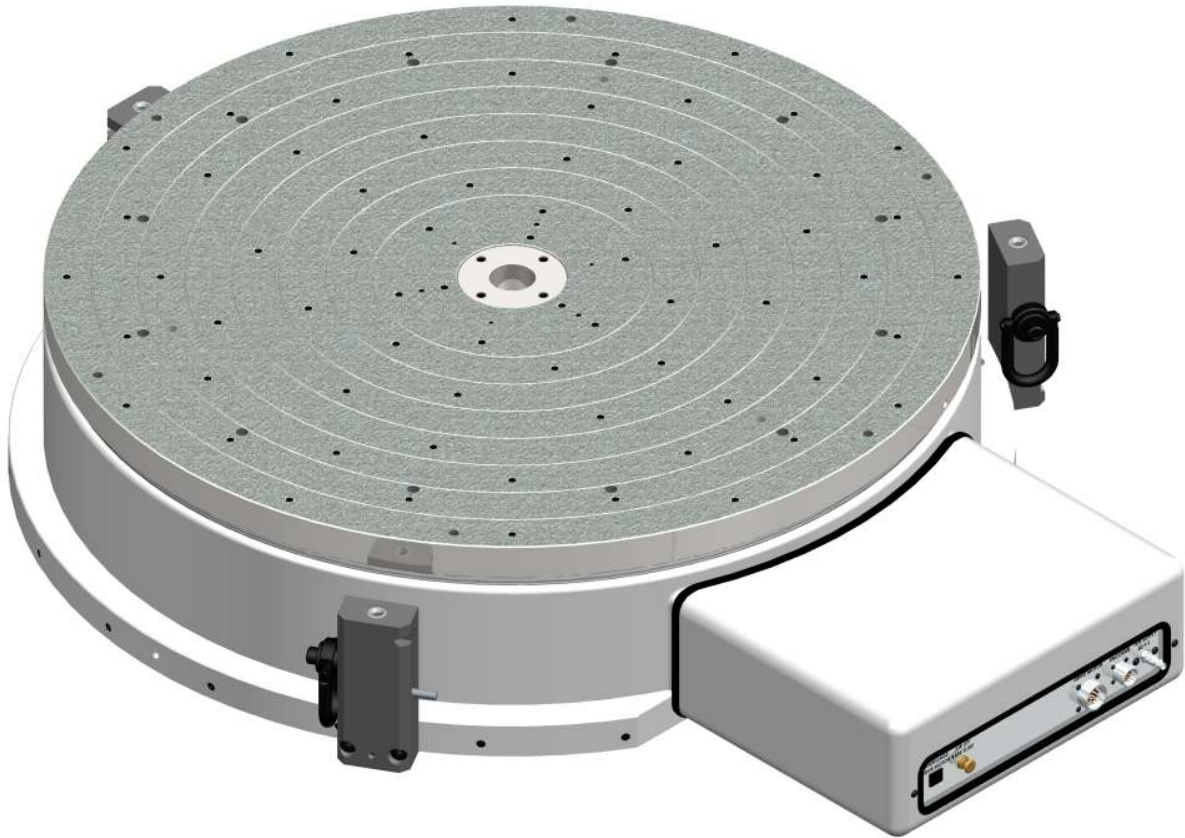


Ball Bearing Capstan Servo (BBCS) Rotary Tables

RT40-BBCS



RT40 Face Plate Geometry Specifications

Description	Accuracy Grades		
	15	30	60
Face Plate Runout at 18.5 in. (469.9 mm) Radius	0.000120 (.0030 mm)	0.000240 (.0061 mm)	0.000480 (.0122 mm)
Base Runout at 20.5 in. (520.7 mm) Radius	0.000240 (.0061 mm)	0.000480 (.0122 mm)	0.000960 (.0244 mm)
Face Plate Dish (Flatness)	0.000240 (.0061 mm)	0.000480 (.0122 mm)	0.000960 (.0244 mm)
Center Pilot Runout	0.000100 (.0025 mm)	0.000200 (.0051 mm)	0.000400 (.0102 mm)

Load Capacity Radial	Load Capacity Thrust	Stiffness Thrust	Operating Air Pressure	RT Weight
2,625 lbs. (1,193 kg)	6,650 lbs. (3,023 kg)	17-39 lbs/microinch 310-710 kg/micron	80 PSI (5.5 Bar)	1,970 lbs. (894 kg)

RT40 Servo Drive Options

Description	Drive Options			
	585	780	1092	1482
Drive Motor	PMI U16M4T	PMI U16M4T	PMI U16M4T	PMI U16M4T
Tachometer	Yes	Yes	Yes	Yes
Ratio	585:1	780:1	1092:1	1482:1
Maximum RPM	5.1	3.8	2.7	2.0

Performance Grade (Reflected Load Inertia Ratio)							
Drive Ratio	0.5	0.75	1	1.25	1.5	1.75	2
		Inertia Capacity (lb-ft ²)					
585	1,198	2,803	4,408	6,014	7,619	9,224	10,829
780	3,005	5,859	8,712	11,566	14,419	17,272	20,126
1092	7,565	13,158	18,750	24,343	29,935	35,528	41,121
1482	15,945	26,246	36,546	46,847	57,148	67,449	77,749
	Inertia Capacity (kg-m ²)						
585	50	118	186	253	321	389	456
780	127	247	367	487	608	728	848
1092	319	554	790	1,026	1,261	1,497	1,733
1482	672	1,106	1,540	1,974	2,408	2,842	3,276